



Certificate of Analysis

UElandy Inc.

Room 302, Building 1, No.18& Chunyao Road,

Xiangcheng District, Suzhou,

Jiangsu Province P.R, 215143 China

www.uelandy.com

Refer to website for regional contact information.

Product Name:	UE DNA Gel Extraction Kit	Lot ID:	221009KE1
Catalog Number:	UE-GX-250	Expiration Date:	10/08/2025

Quality Control

Electrophoretic Analysis

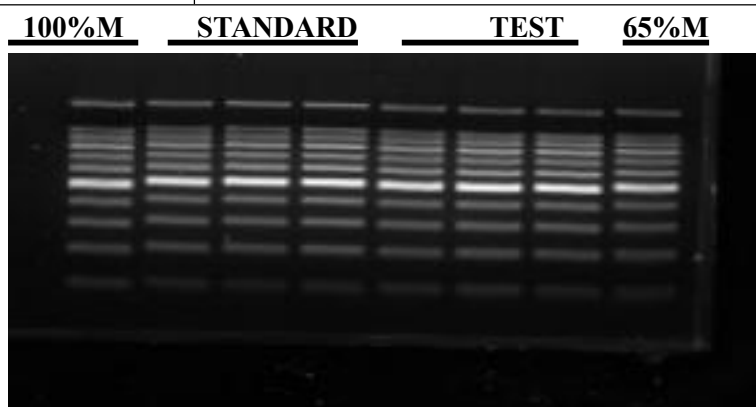
- Comparison of the Test Sample to a previously tested Standard. Acceptable range for Test Sample is $\leq \pm 10\%$ of Standard, based upon analysis. The “Standard” is a previously tested and validated sample.
- The recovery of DNA from agar gel is more than 65%.

Recovery Analysis

- The recovery of DNA from agar gel is more than 65%. Loading 8 μ l UE-GX product mixture to the 2% agar gel for electrophoresis, and also loading 3.46 μ l and 5.33 μ l 100bp Ladder for 65% and 100% as contrast to estimate the recovery of purified PCR product by visual examination.

Gel Image and Test Data

Item	Test Date						Sample
	1	2	3	4	5	6	
Yield (%)	100	100	100	100	100	100	1,2,3 are Test Samples 4,5,6 are Standards
[Test Sample/Standard] Yield Difference	0%						PASS



UElandy Inc. warrants and represents that all inspections and testing for the article described above

have been performed at UElandy Inc. QC laboratory located on-site at the manufacturing plant. UElandy Inc. manufacturing facility is located at Room 302, Building 1, No.18& Chunyao Road, Xiangcheng District, Suzhou, Jiangsu Province P.R, 215143 China

(QC Inspector) *tian qin zheng*

(Approver) *Qin Hua-Yu*